



FIVE MEMBER COMMISSION

EXECUTIVE DIRECTOR  
MARCI ANDINO  
UA01—60013601

ADMINISTRATIVE MANAGER I  
JANET REYNOLDS  
AH20—60013600

ACCT/FISCAL ANALYST I  
ALY TROTTER  
AD20—60013498

FISCAL TECH I  
ELIZABETH SIMMONS  
AD01—60013499

POSTAL COURIER  
EDWIN JONES  
AB20—60013602

ADMIN COORD I  
VACANT  
AH10—60013497

POSTAL SPECIALIST  
VACANT  
AB10—60013495

ADMIN SPECIALIST II  
VACANT  
AA50—60013496

PROGRAM MANAGER I  
CHRIS WHITMIRE  
AH45—60013612

INST / TRNG COORD II  
ARLENE CRISWELL  
AG35—60013614

INST / TRNG COORD I  
HEATHER SHERMAN  
AG30—60013613

INFO RES CONSULT II  
BRIAN LEACH  
AJ45—60013605

INFO RES CONSULT I  
DANIEL HENDRIX  
AJ42—60013603

DATA COORD I  
SUSAN ROGERS  
AJ15—60013606

PROGRAM MANAGER I  
HOWARD SNIDER  
AH45—60013604

INFO RES COORD I  
SHEACK ABRAHAM  
AJ33—60013607

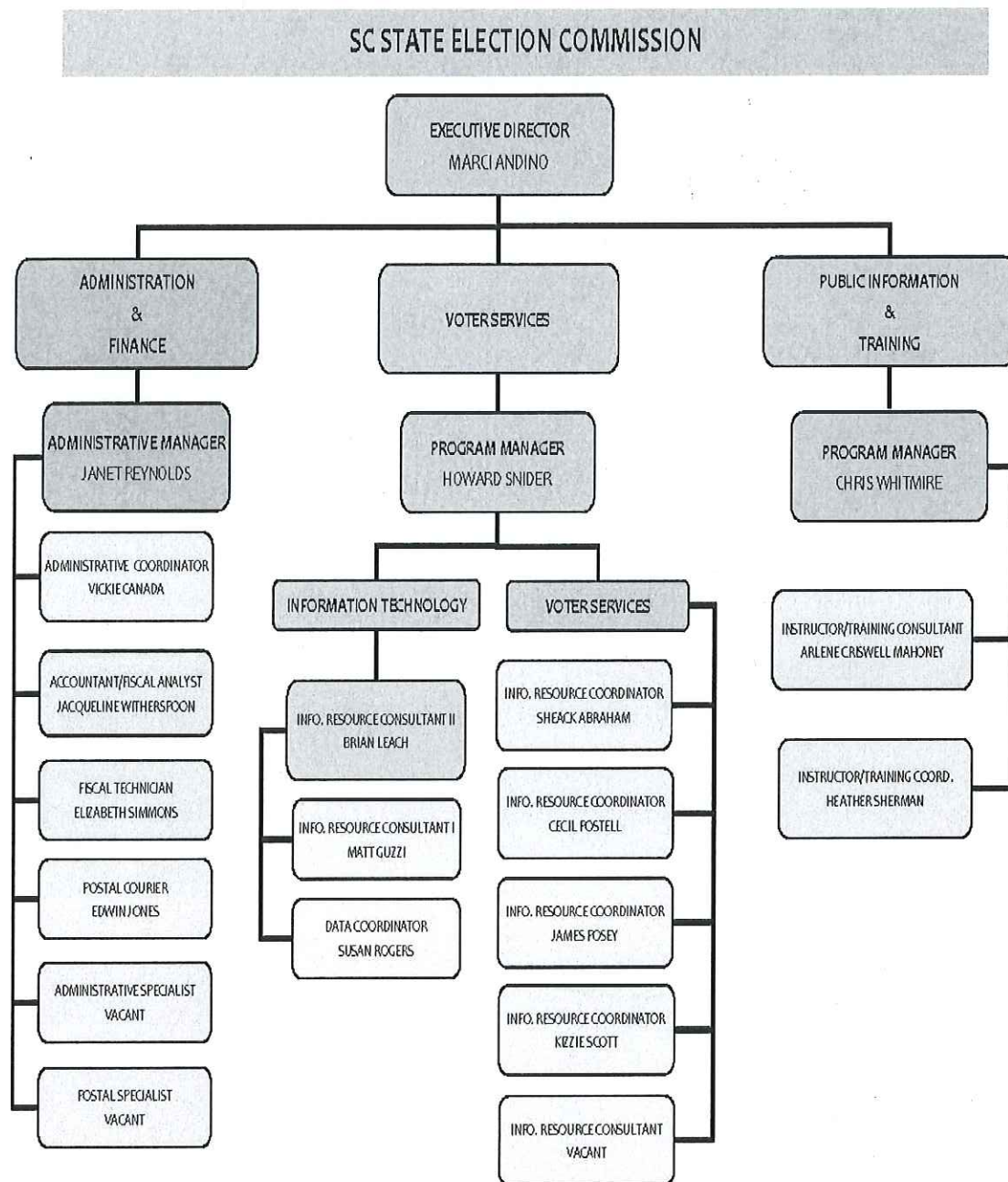
INFO RES COORD I  
JAMES POSEY  
AJ33—60013609

INFO RES COORD I  
KIZZIE SCOTT  
AJ33—60013611

INFO RES COORD I  
CECIL POSTELL  
AJ33—60013608

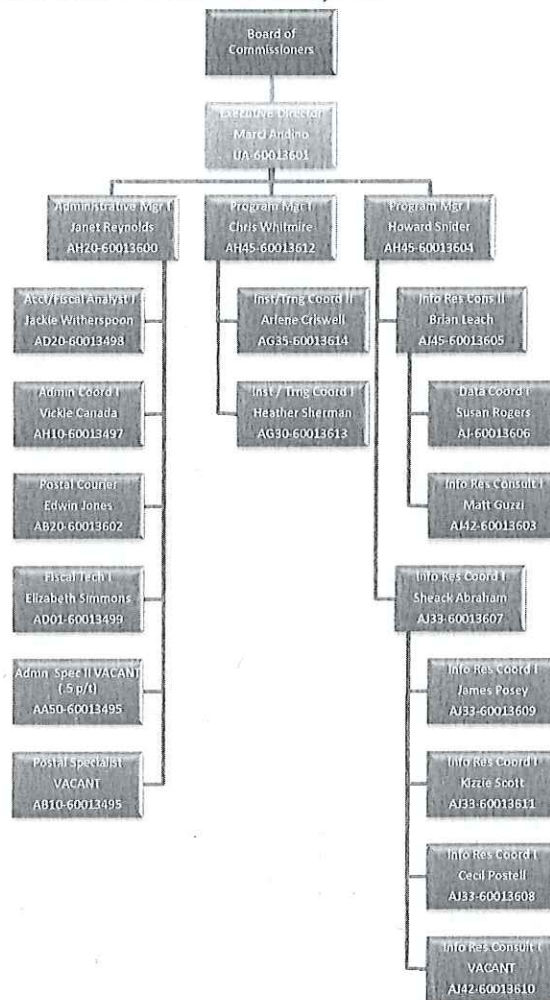
INFO RES CONSULT I  
VACANT  
AJ42—60013610

# State Election Commission – Organizational Chart – June 30, 2013

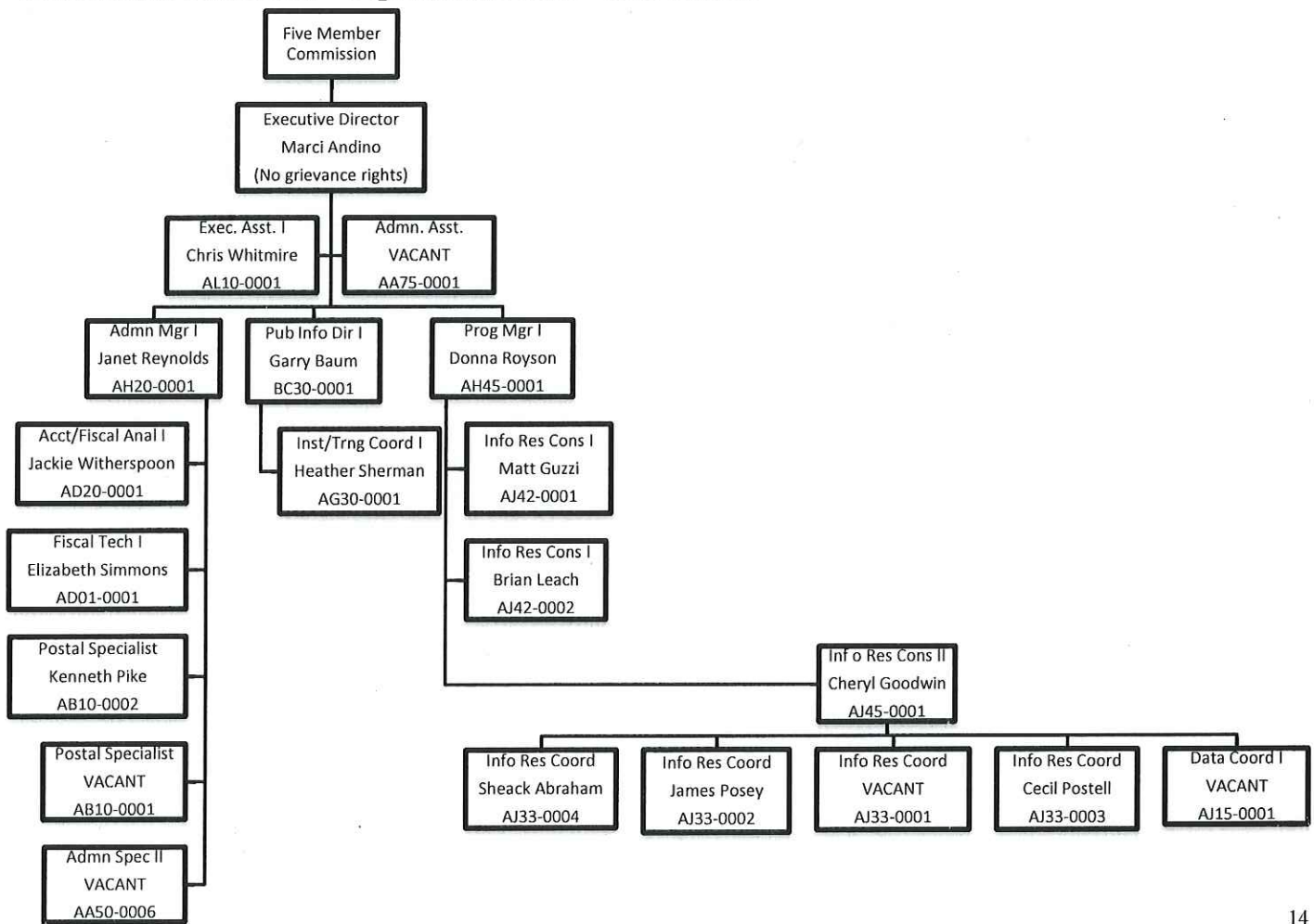


EVERY VOTE MATTERS.  
EVERY VOTE COUNTS.

## State Election Commission – Organizational Chart – June 30, 2012

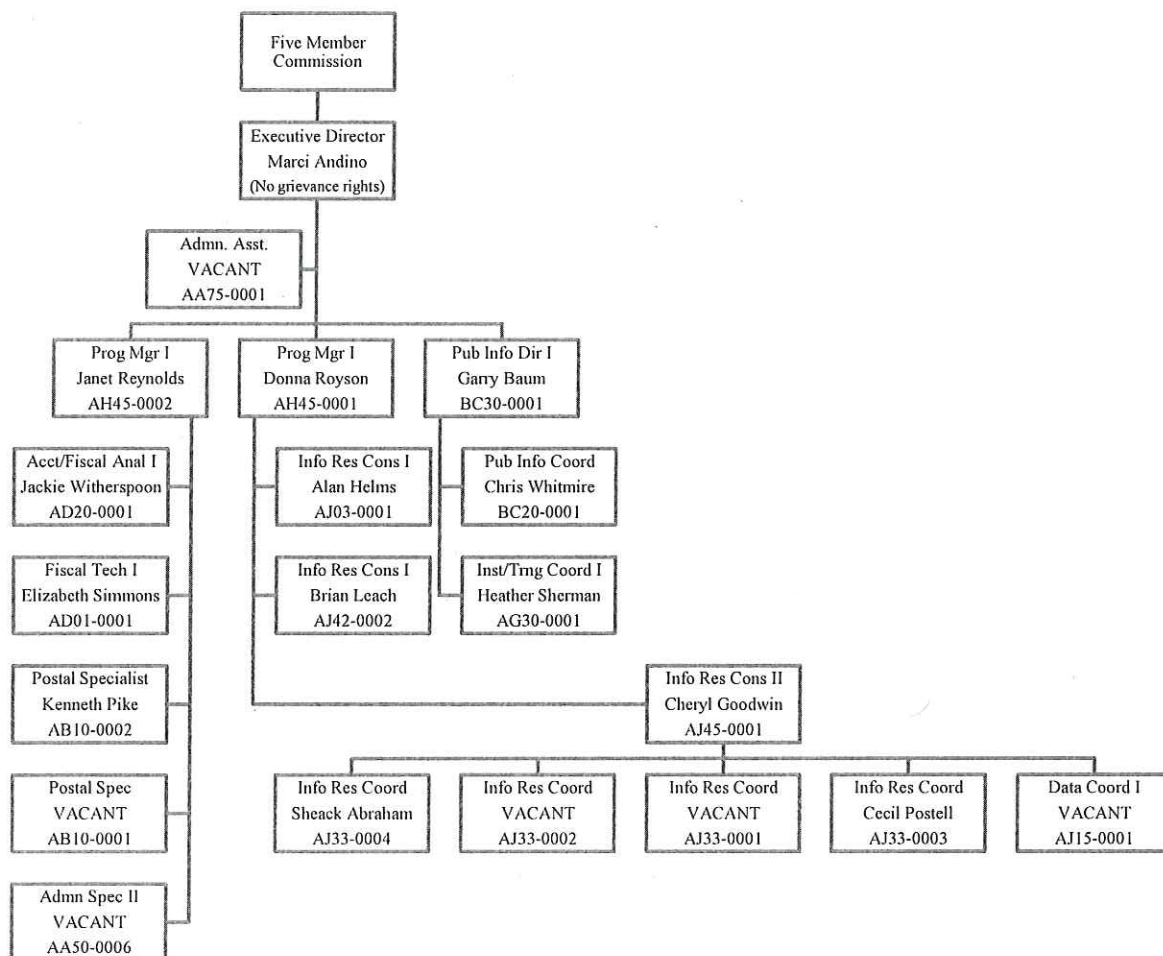


# State Election Commission – Organizational Chart – June 30, 2011

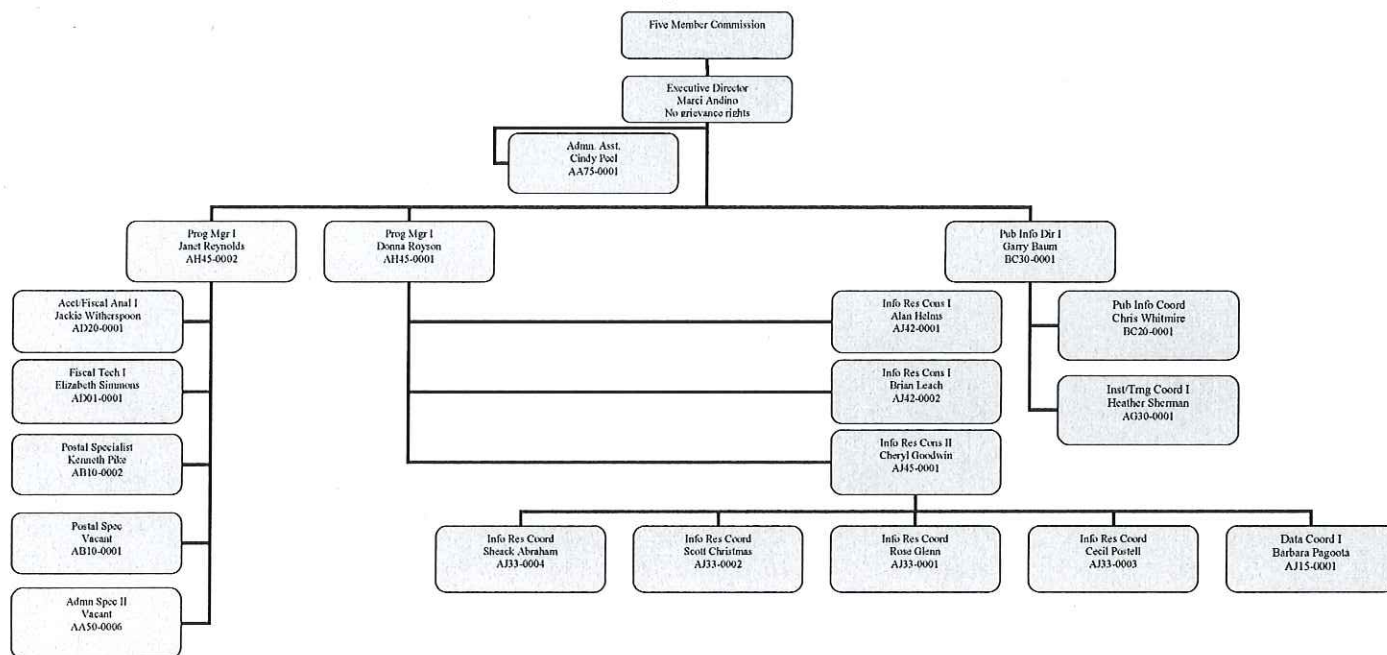




# State Election Commission – Organizational Chart – June 30, 2010

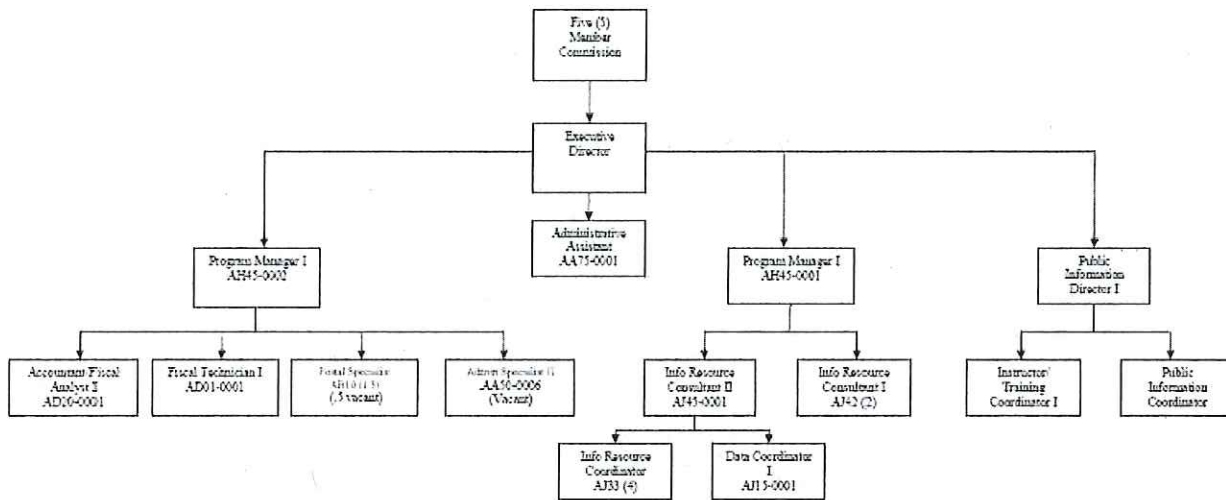


**State Election Commission**  
**Organizational Chart**  
Updated 10.13.09





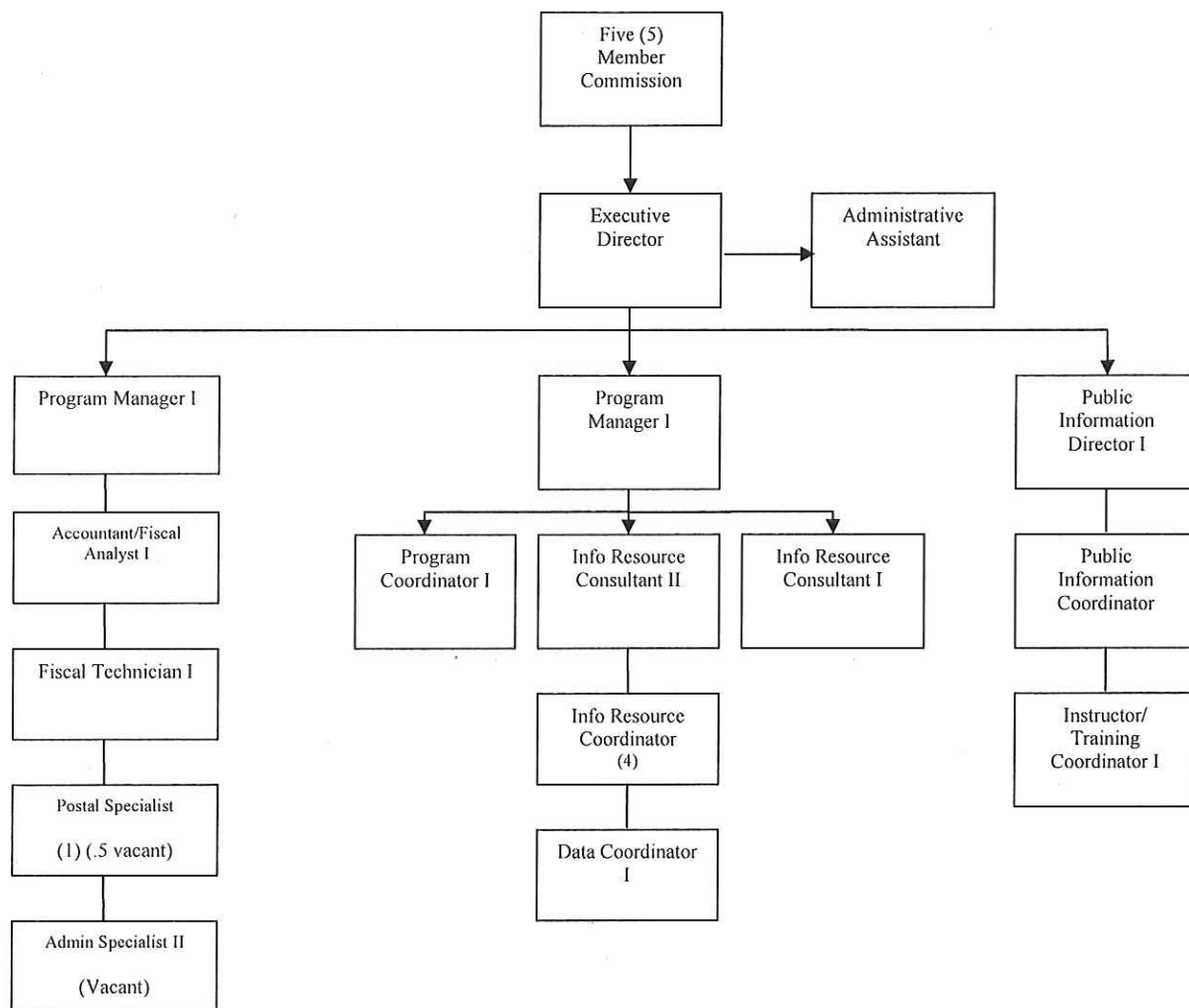
## State Election Commission Organizational Structure



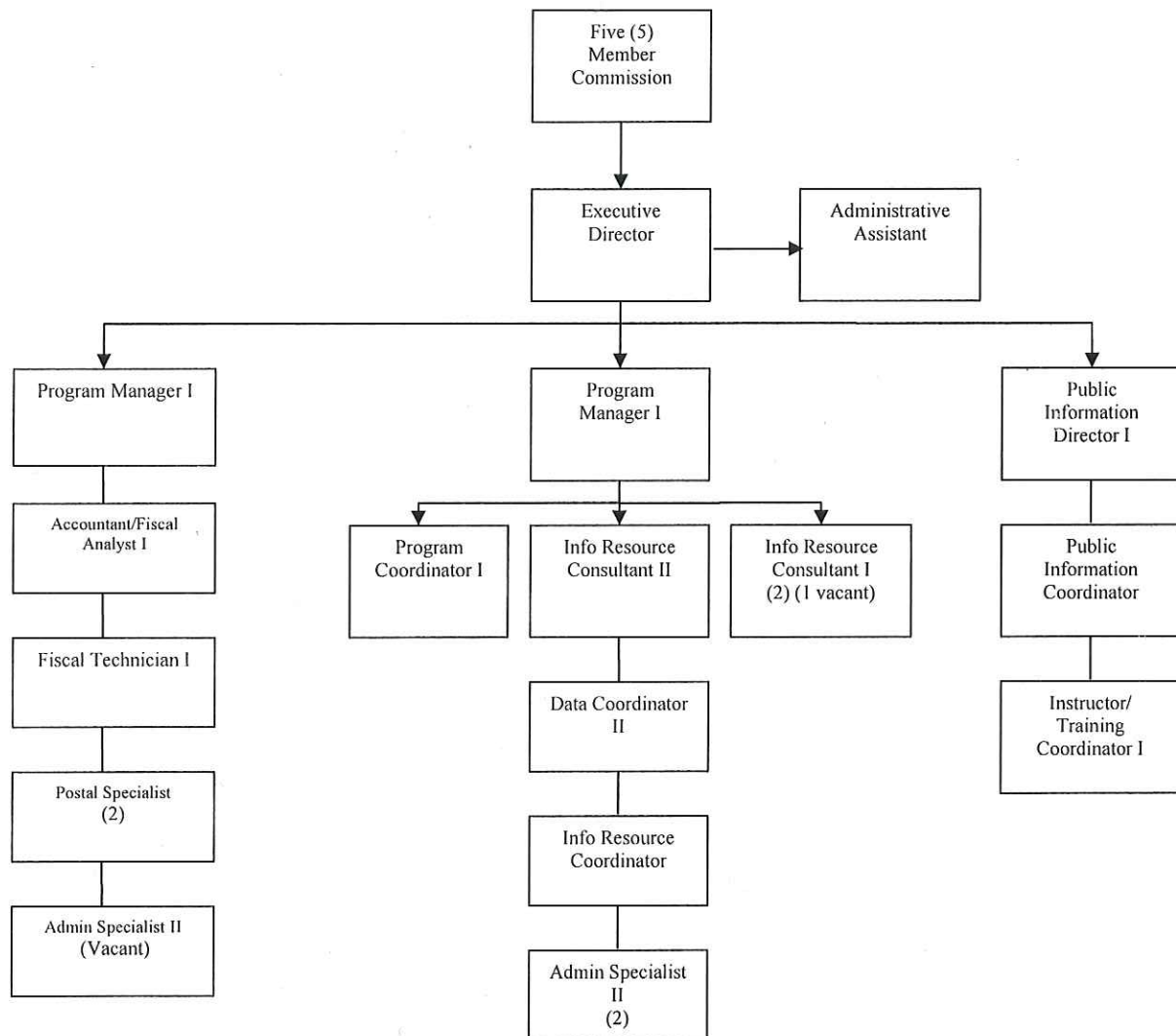
Executive Director is the only position in the agency that is exempt from grievance rights

Updated 7.29.08

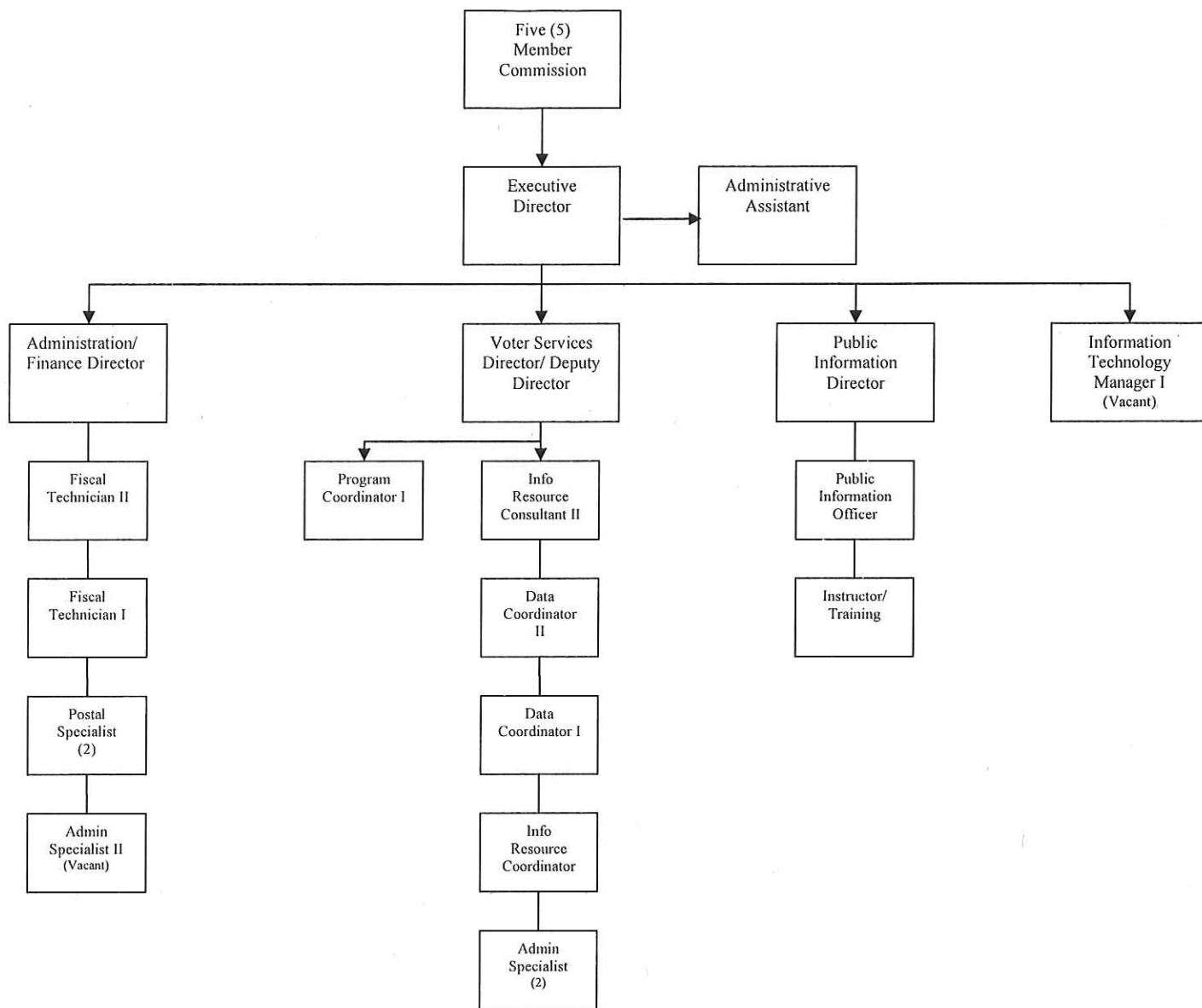
## State Election Commission Organizational Structure



## Organizational Structure



## State Election Commission Organizational Structure





# State Election Commission Organizational Structure

